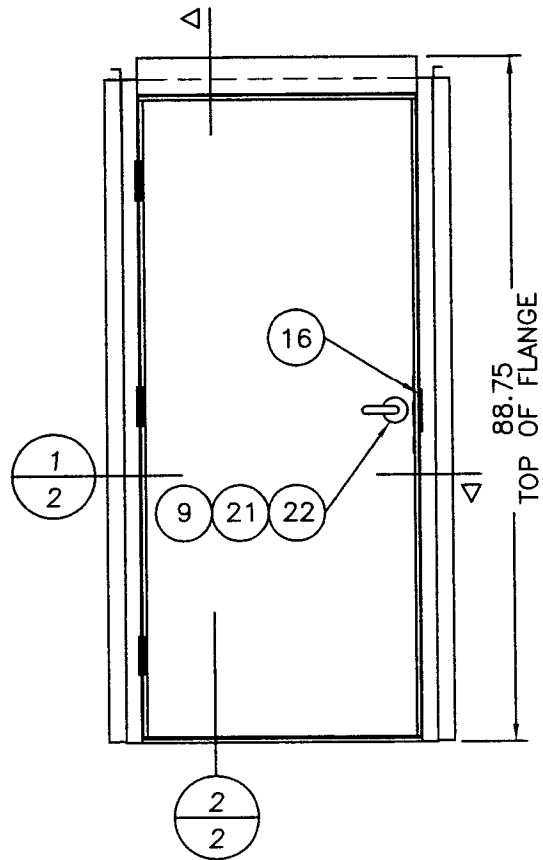
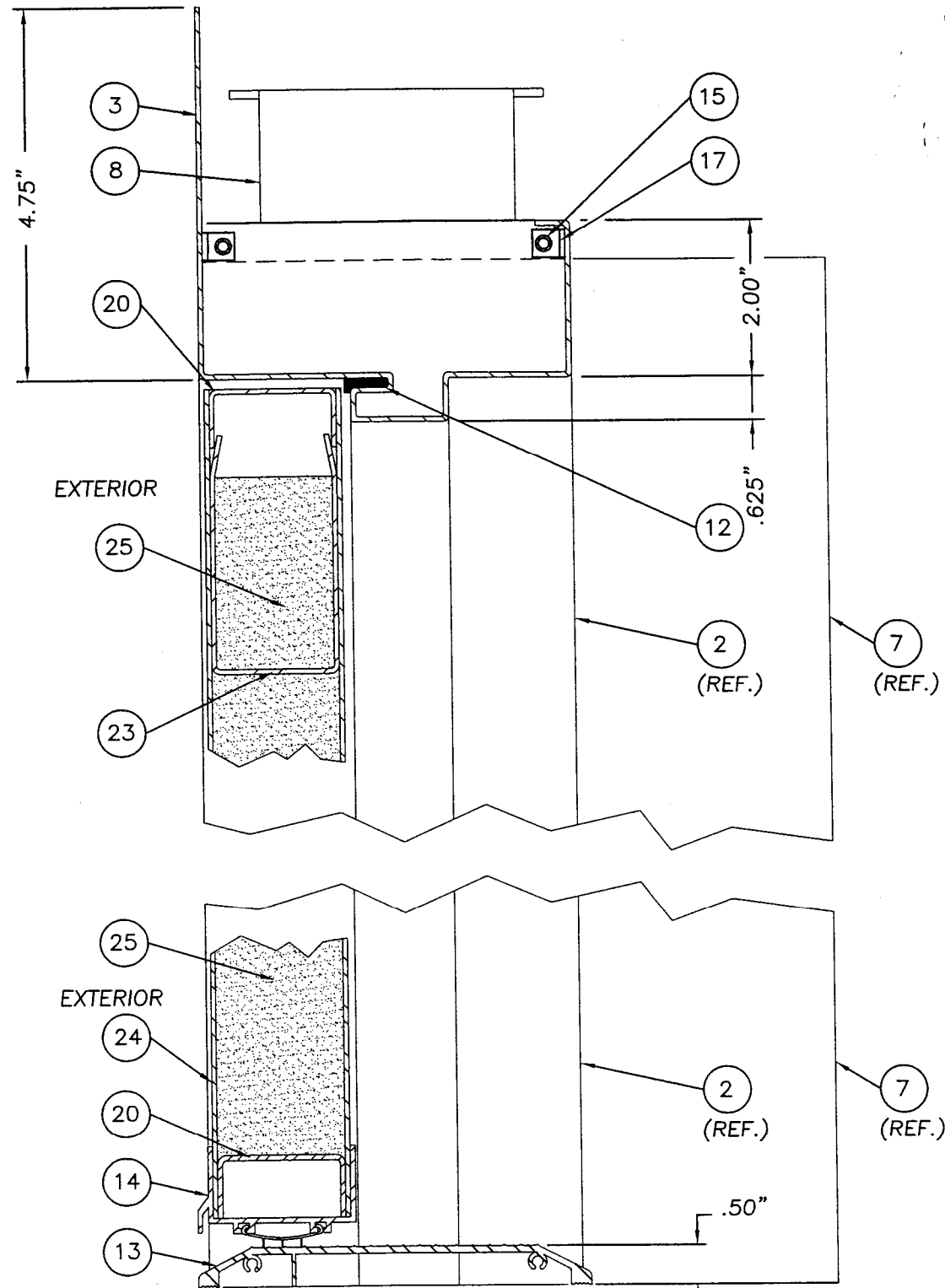


Item	DESCRIPTION	Material
1	STRIKE JAMB FRAME 2.625" x 4.75" (.054" MIN.)	STEEL
2	HINGE JAMB FRAME 2.625" x 4.75" (.054" MIN.)	STEEL
3	HEADER FRAME 4.75" HIGH TOP x 4.81" (.054" MIN.)	STEEL
4	HINGE REINFORCEMENT PLATE 9.0" x 1.24" (.180" MIN.)	STEEL
5	#10 x 1" HEX SCREWS	STEEL
6	#12 x 1 1/2" ANCHOR SCREW	STEEL
7	SUB JAMBS C-CHAN. 1 1/2" x 8" x 85 1/8" (.054" MIN.)	STEEL
8	SUB-JAMB FLOOR/HEAD ANCHOR PLATES (.098" MIN.)	STEEL
9	YALE 5307 LEVER LOCK	STEEL
10	#12 x 1 1/2" SELF TAPPING HEX SCREW	STEEL
11	#10 x 1" TEK SCREWS	STEEL
12	Q-LON SCHLEGEL QEBD-500 FOAM-FILLED COMP. GASKET	
13	THRESHOLD 4 27/32" x 1 1/2" H MILL FINISH ALUM 6063-T5	ALUM
14	SWEEP 3 FIN 0.942" x 1.41" THERMOPLASTIC OLEFIN	
15	#14 x 1 1/4" HEX HEAD SELF TAPPING SCREW	STEEL
16	STRIKE PLATE 4.86" x 1.75" x 0.079" THK.	STEEL
17	ANGLE 1.375" x 1.5" x .094" THK. (WELDED TO HEAD)	STEEL
18	3/16" x 1 3/4" RAWL TAPCON ANCHOR	STEEL
19	3/16" x 2" RAWL TAPCON ANCHOR	STEEL
20	END CLOSURE - TOP/BOTTOM (.054" MIN.)	STEEL
21	YALE CRE 8722 FL MORTISE LOCK	STEEL
22	PARKER 9160 ULB, GRADE II, W/SINGLE CYLINDER DEAD-BOLT	STEEL
23	CLOSER REINFORCEMENT (.098" MIN.)	STEEL
24	ADVANTAGE DOOR PANEL MFG BY CECO (.043" MIN. SKIN THK.)	STEEL
25	CORE (1.8 DENSITY) NOM. DOOR THK. IS 1 3/4" FOAMED IN PLACE URETHANE	POLYURETHANE
26	4-1/2" X 4-1/2" TEMPLATE HINGE	STEEL

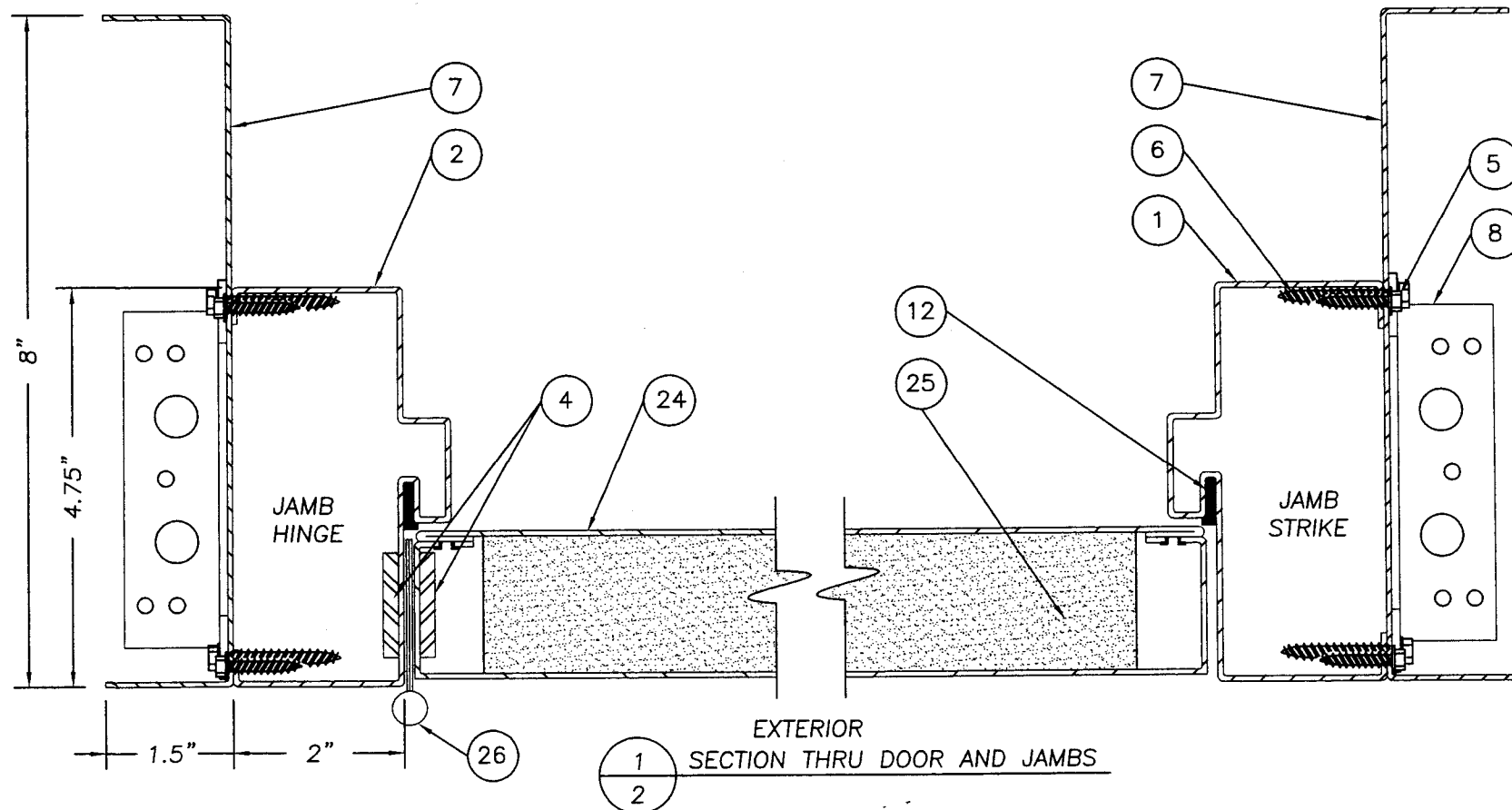
NOTES:
 1. THE BILL OF MATERIALS SHOWN IS FOR THE ENTIRE DOOR UNIT.
 ONLY PARTS REQUIRED TO CLARIFY DETAILS ARE CALLED OUT.



PRE-ASSEMBLED DOOR UNIT



2 VERTICAL CROSS SECTION
 2 HEADER, DOOR AND SILL



EXTERIOR SECTION THRU DOOR AND JAMBS

Documents Prepared By:
RW BUILDING CONSULTANTS, INC.
 P.O. Box 230 Vero Beach, FL 33595
 Phone No.: 813.659.9197
 Florida Board of Professional Engineers
 Certificate of Authorization No. 9813
 Wendell W. Flaney, P.E. NO. 54158
 5/05/04

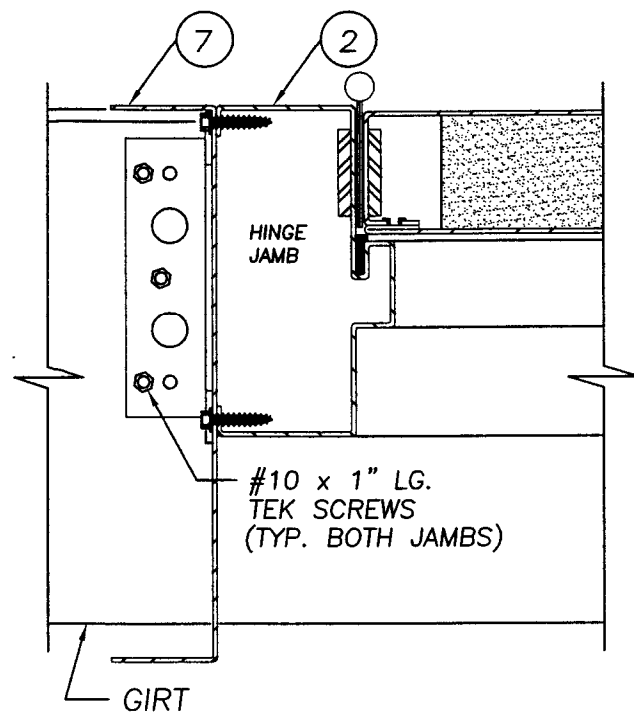
PRODUCT:
 ADVANTAGE STEEL DOOR & FRAME SYSTEM FOR METAL BUILDING

PART OR ASSEMBLY:
 BILL OF MATERIALS & DOOR CROSS SECTIONS

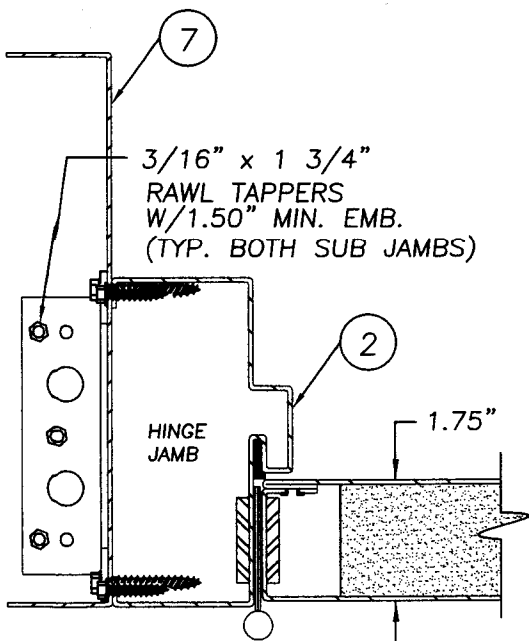
NO.	DATE	BY

REVISIONS

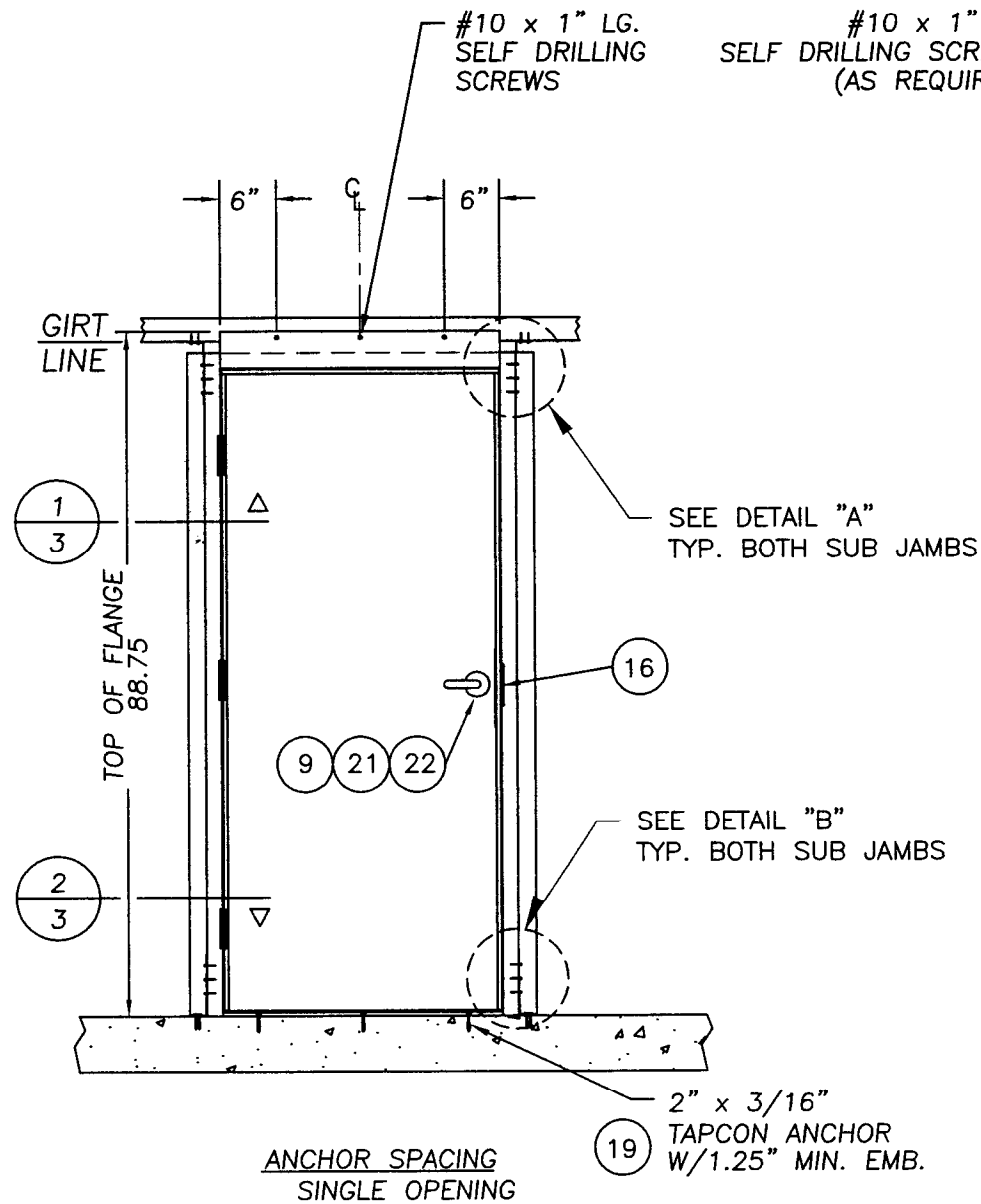
DATE: 03/25/04
 SCALE: N.T.S.
 DWG. BY: EKW
 CHK. BY: RW
 DRAWING NO.: FL-198
 SHEET 2 OF 4



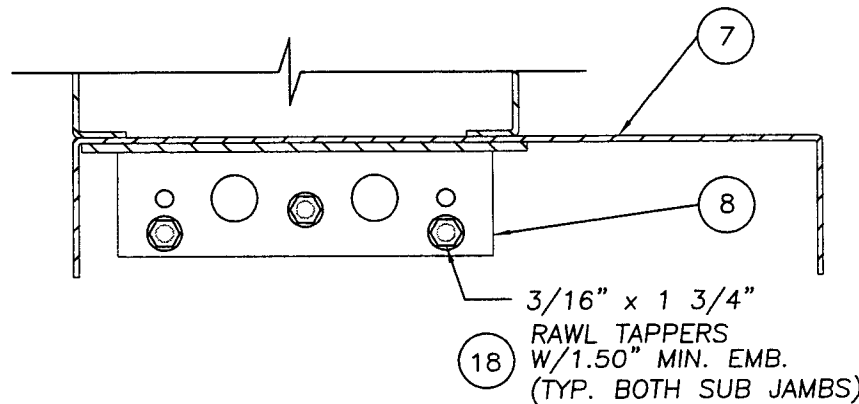
1 SECTION
3 SUB-JAMB ANCHORING TO GIRT



2 SECTION
3 SUB-JAMB ANCHORING TO FLOOR

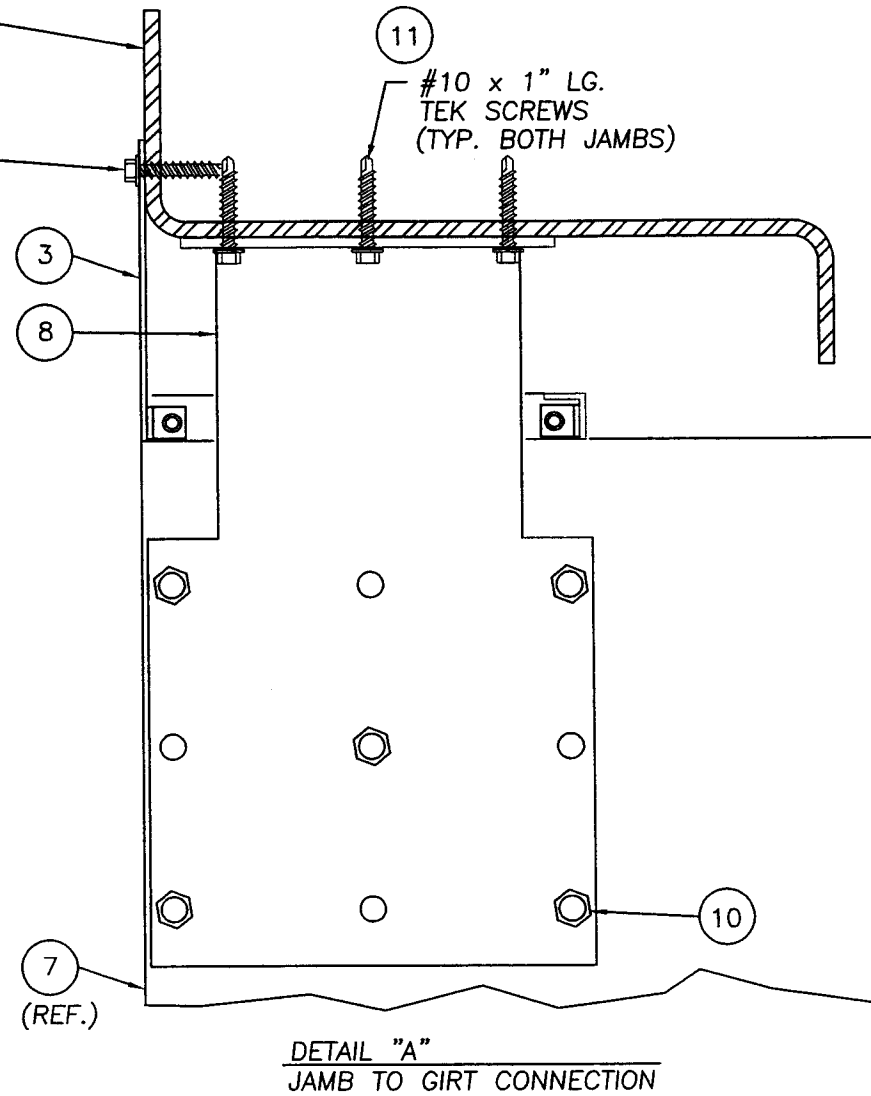


VIEW A - A

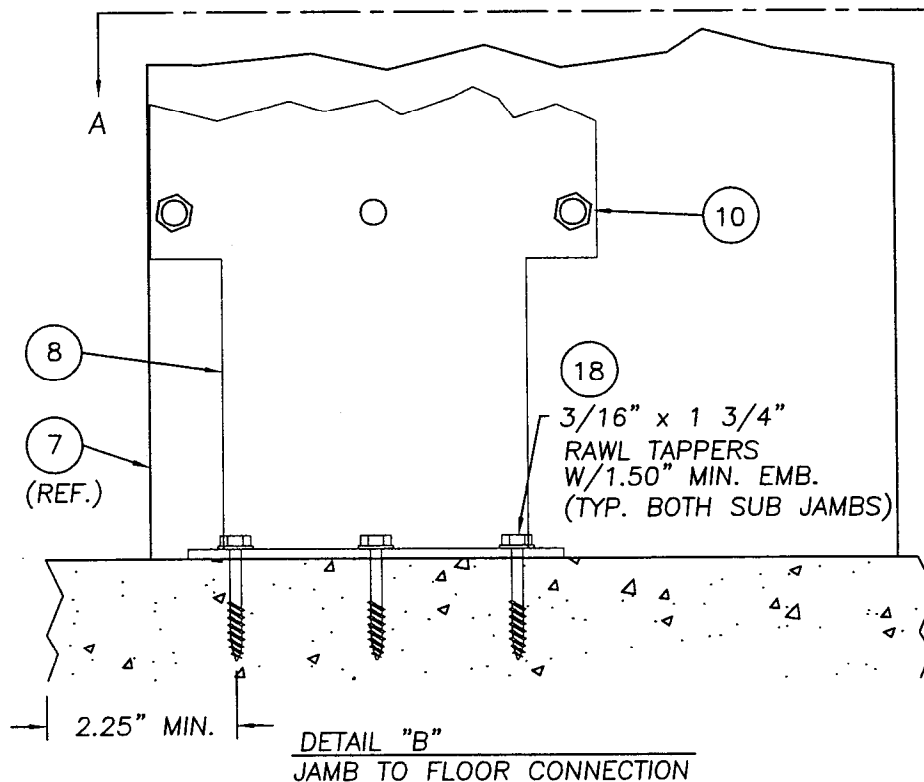


18 3/16" x 1 3/4" RAWL TAPPERS W/1.50" MIN. EMB. (TYP. BOTH SUB JAMBS)

GIRT BY OTHERS SHOWN FOR REF. ONLY
#10 x 1" LG. SELF DRILLING SCREWS (AS REQUIRED)



DETAIL "A"
JAMB TO GIRT CONNECTION



DETAIL "B"
JAMB TO FLOOR CONNECTION

Documents Prepared By:

RW BUILDING CONSULTANTS, INC.
P.O. Box 230 Vero Beach, FL 33595
Phone No.: 313.659.9197
Florida Board of Professional Engineers
Certificate of Authorization No. 9813
Wendell W. Hapsy, P.E. No. 54158
5/05/04

PRODUCT: ADVANTAGE STEEL DOOR & FRAME SYSTEM FOR METAL BUILDINGS
PART OR ASSEMBLY: ANCHOR LOCATIONS & SECTIONS

NO.	DATE	BY	REVISIONS

DATE: 03/25/04

SCALE: N.T.S.

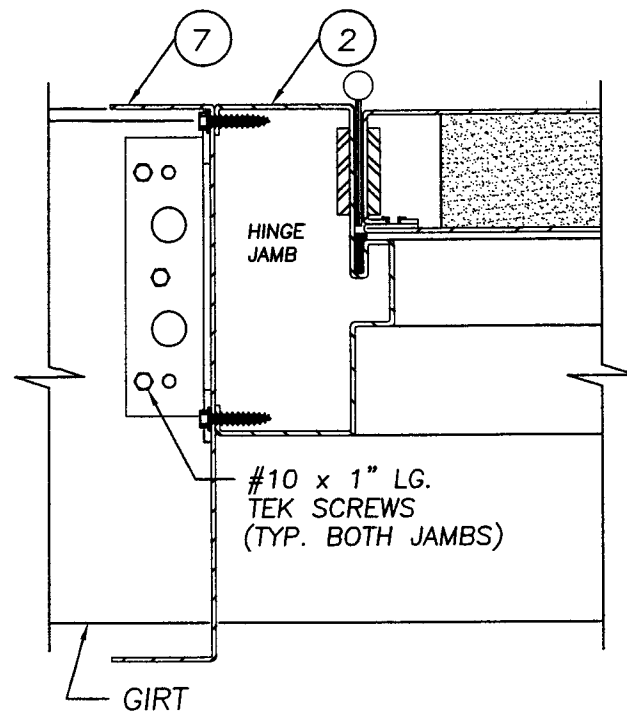
DWG. BY: EKW

CHK. BY: RW

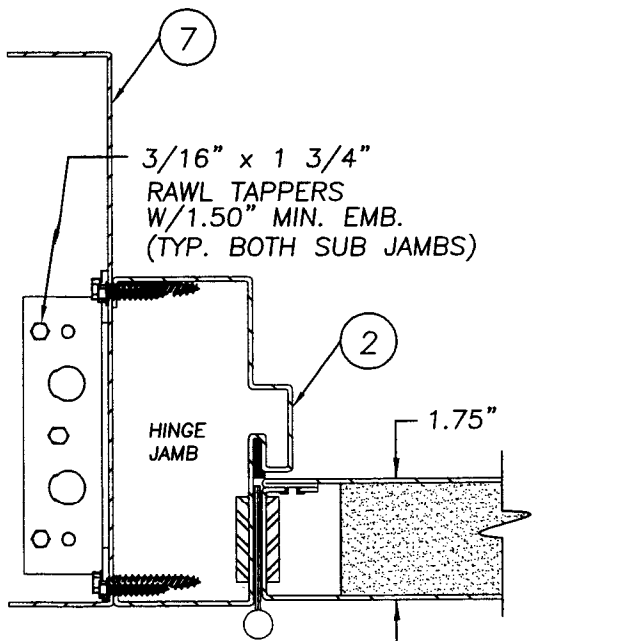
DRAWING NO.:

FL-198

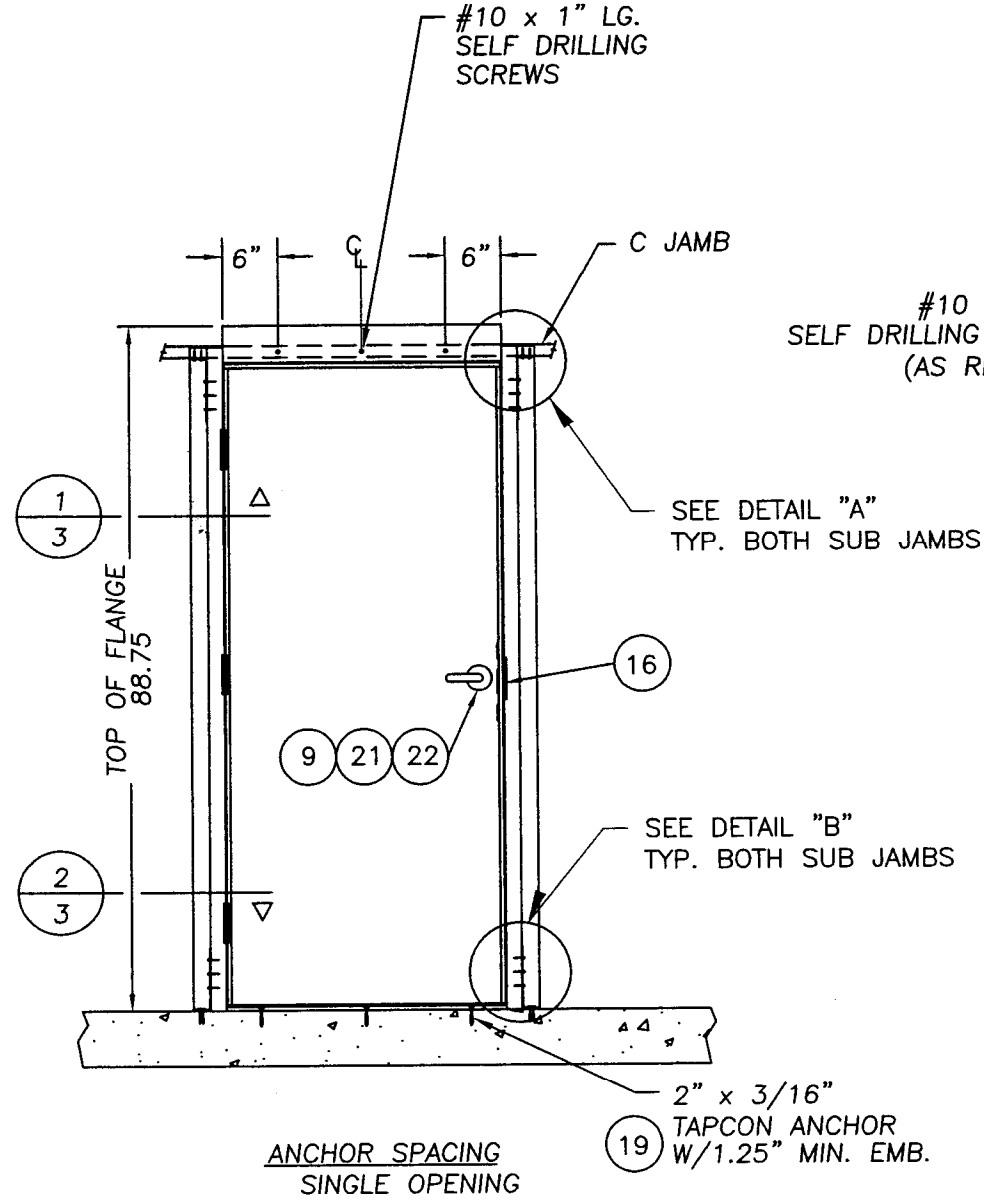
SHEET 3 OF 4



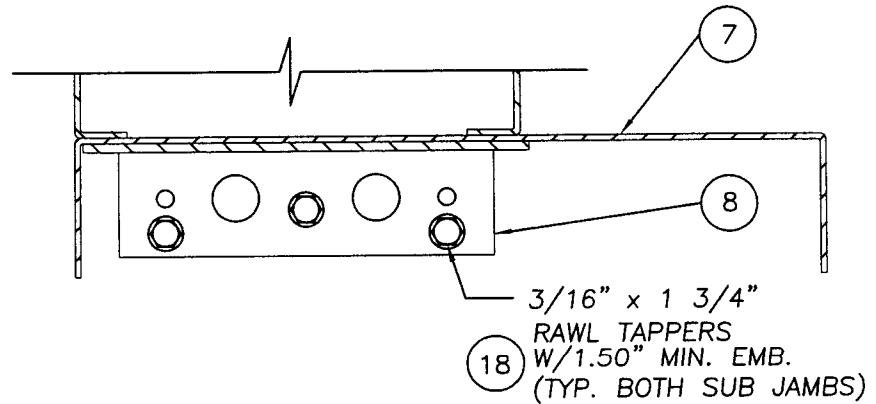
1 SECTION
3 SUB-JAMB ANCHORING TO GIRT



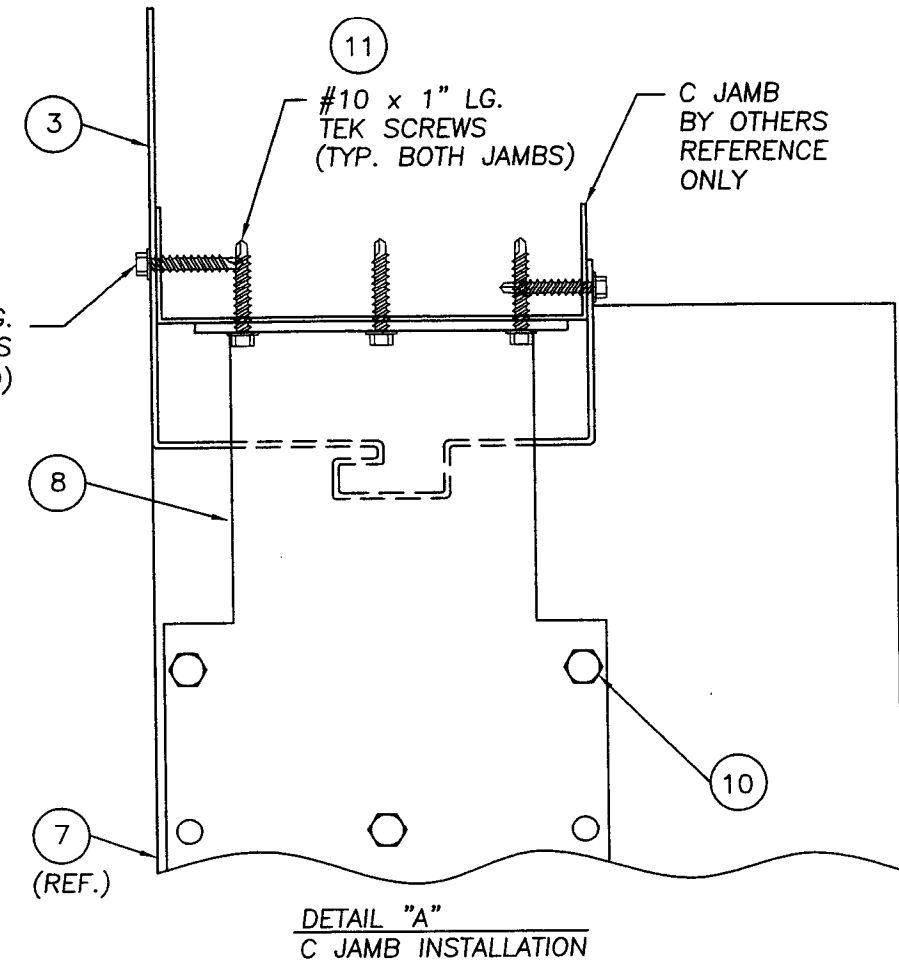
2 SECTION
3 SUB-JAMB ANCHORING TO FLOOR



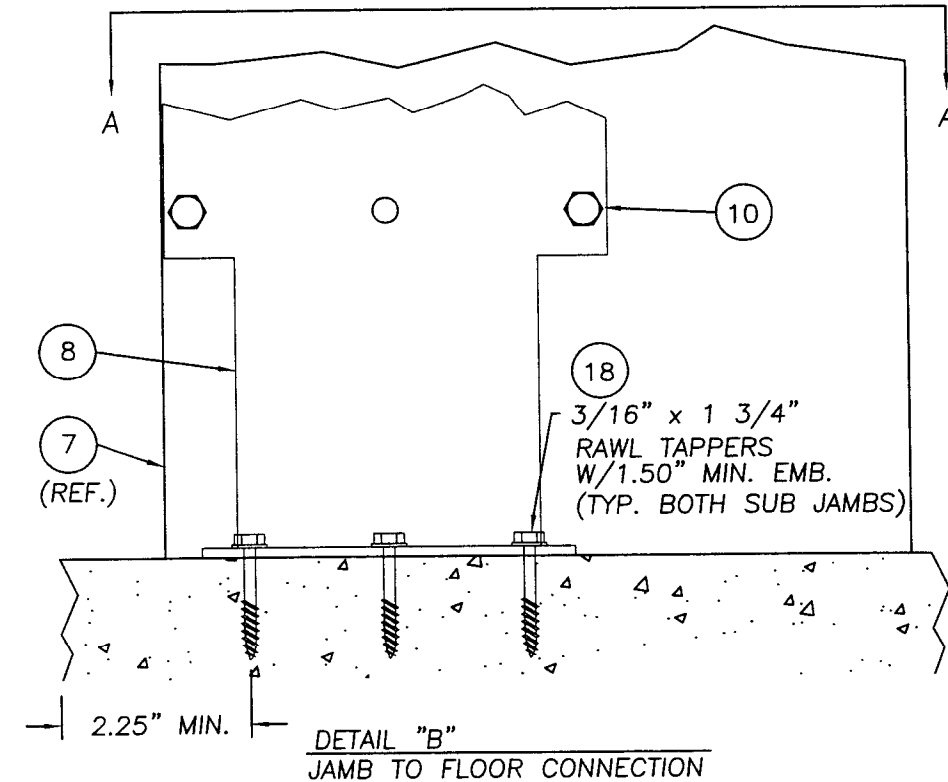
ANCHOR SPACING
SINGLE OPENING



VIEW A - A



DETAIL "A"
C JAMB INSTALLATION



DETAIL "B"
JAMB TO FLOOR CONNECTION

Documents Prepared By: **RW** BUILDING CONSULTANTS, INC.
P.O. Box 230 Valrico, FL 33595
Phone No.: 813.659.9197
Florida Board of Professional Engineers
Certificate of Authorization No. 9813
Wendell W. Hagarty, P.E. NO. 54158 5/05/04

PRODUCT:	ADVANTAGE STEEL DOOR & FRAME SYSTEM FOR METAL STUD CONSTRUCTION	
PART OR ASSEMBLY:	ANCHOR LOCATIONS & SECTIONS	
NO.	DATE	BY
		REVISIONS
DATE: 03/25/04		
SCALE: N.T.S.		
DWG. BY: EKW		
CHK. BY: RW		
DRAWING NO.: FL-198		
SHEET 4 OF 4		